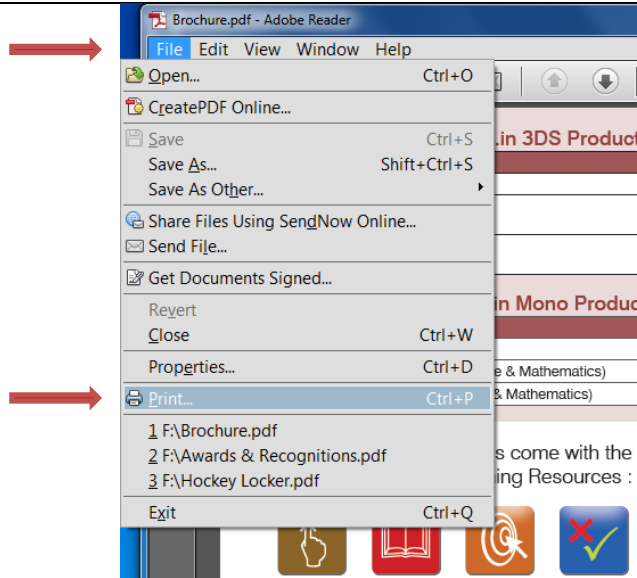
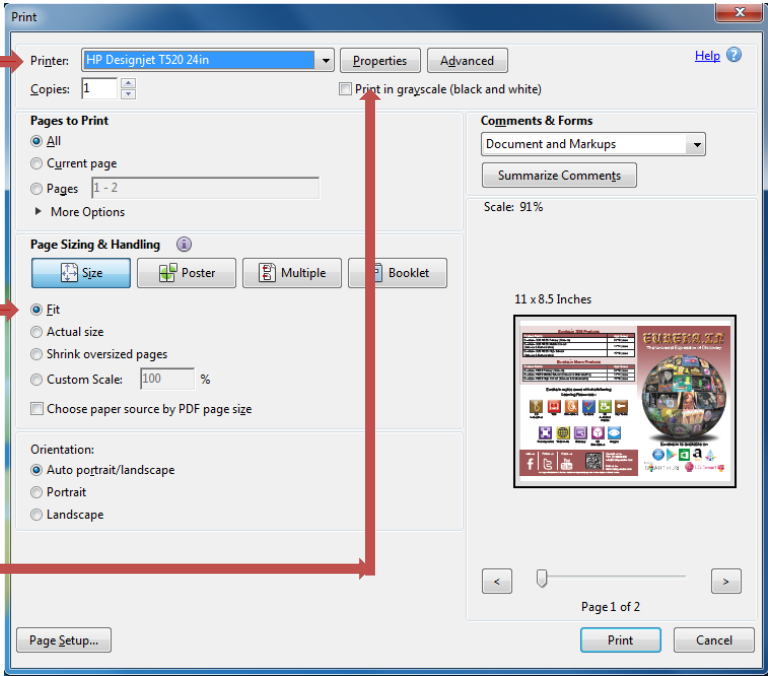


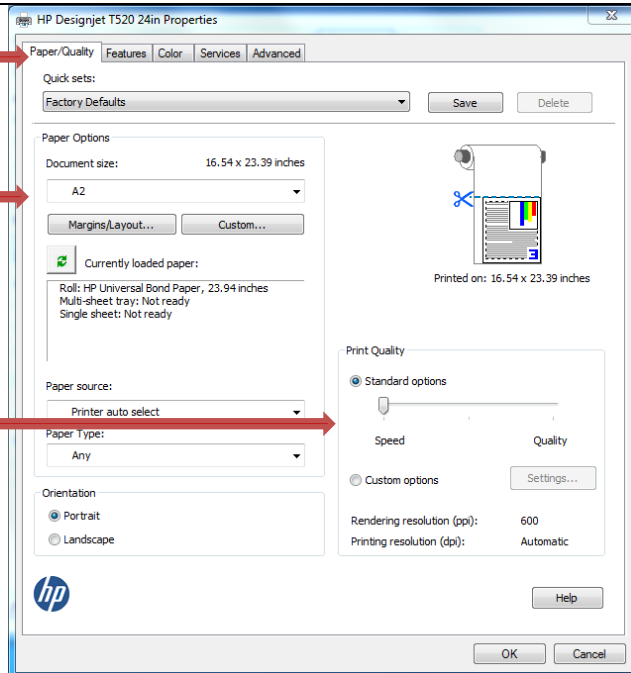
Note: Instructions assume original document was created at a common page size, such as A4 (8.5 x 11). Depending on size and orientation of the original file, you may have to adjust the settings below in order to have your output scaled correctly.

<p>1. <b>Open</b> selected PDF document</p>	
<p>2. Select <b>File &gt; Print</b> from the PDF Menu.</p>	 <p>A screenshot of the Adobe Reader application window titled 'Brochure.pdf - Adobe Reader'. The 'File' menu is open, showing options like Open..., Save, and Print... The 'Print...' option is highlighted in blue. Red arrows point to the 'File' menu and the 'Print...' option.</p>
<p>3. Under Printer drop down, select <b>HP Designjet T520 24in.</b> (Note – the Perfecta 2400 uses this print driver when printing from Reader. Actual printer name may vary slightly depending on your printer connectivity (USB, Wireless, LAN).)</p> <p>4. Ensure that Page Sizing and Handling is set to <b>Fit</b>. (Note – the page size will <b>not</b> be automatically selected according to the document size.)</p> <p>5. Press the <b>Properties</b> button</p>	 <p>A screenshot of the 'Print' dialog box. The printer is set to 'HP Designjet T520 24in.'. The 'Pages to Print' section is set to 'All'. The 'Page Sizing &amp; Handling' section is set to 'Fit'. The 'Properties' button is highlighted. Red arrows point to the printer name, the 'Fit' radio button, and the 'Properties' button.</p>

6. Select the **Paper/Quality** tab.

7. Choose **Document Size**. If you want to define a new custom paper size, press the **Custom** button. See below for a chart of Standard Paper Sizes.

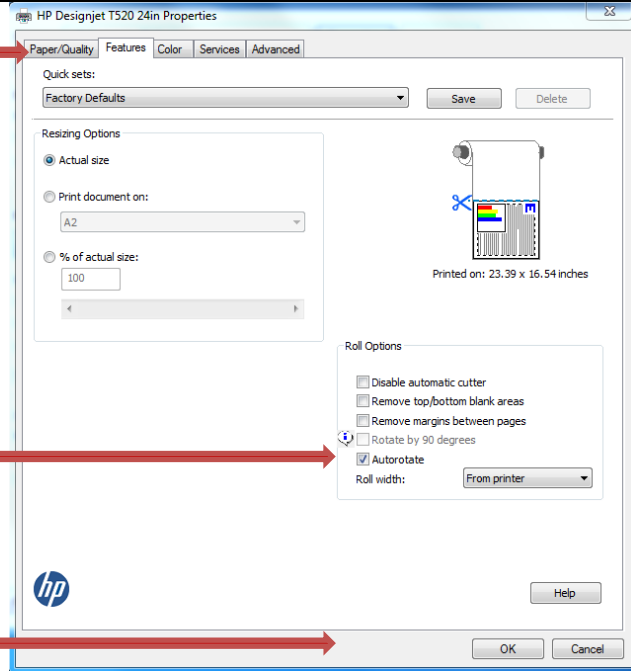
8. Choose **Print Quality**.



9. Select the **Features** tab.

10. Select **Autorotate**.

11. Select **OK**



12. Check the print preview appears scaled correctly in the Print dialog box.

13. Select **Print**.

### STANDARD PAPER SIZES\*

The most common sizes for Perfecta™ 2400 posters using a 24-in. wide roll paper are highlighted below.

Paper Choice / Name	US measurement (inches)	Metric Measurement (mm)
US Letter(ANSI A)	8.5 x 11	215.9 x 279.4
Legal	8.5 x 14	215.9 x 355.6
Tabloid (ANSI B)	11 x 17	279.4 x 431.8
ANSI C	17 x 22	431.8 x 538.8
ANSI D	22 x 34	558.8 x 863.6
ANSI E	34 x 44	863.6 x 1117.6
ARCH A	9 x 12	228.6 x 304.8
ARCH B	12 x 18	304.8 x 457.2
<b>ARCH C</b>	<b>18 x 24</b>	<b>457.2 x 609.6</b>
ARCH D	24 x 36	609.6 x 914.4
ARCH E	36 x 48	914.4 x 1219.2
ISO A4	8.26 x 11.69	210 x 297
ISO A3	11.69 x 16.54	297 x 420
<b>ISO A2</b>	<b>16.54 x 23.39</b>	<b>420 x 594</b>
<b>ISO A1</b>	<b>23.39 x 33.11</b>	<b>594 x 841</b>
ISO A0	33.11 x 46.81	841 x 1189
Oversize A2	19.13 x 24.61	486 x 625
<b>Oversize A1</b>	<b>24.61 x 35.43</b>	<b>625 x 900</b>
Oversize A0	35.43 x 49.01	900 x 1245
JIS B4	10.12 x 14.33	257 x 364
JIS B3	14.33 x 20.27	364 x 515
JIS B2	20.27 x 28.66	515 x 728
JIS B1	28.66 x 40.55	728 x 1030

\*Additional information regarding paper sizes can be located on the internet.